



MOT Co.,Ltd & TOS TEC Inc



Business Item : UW Commercial Diving Service & UW ROV & Drone

Head office : 80 Saha-ro, Saha-gu, Busan, Korea

Jeju office : 11-4 Sangmo-ri, Daejeong-eup, Seogwipo-si, Jeju-do, Korea

**TEL : +82-070-8672-1039 FAX : +82-070-4032-1035
Mobile(24h) +82-10-5883-9300**

E-mail : mot@mot21.com tostec@tos-tec.com

Web Site : www.mot21.com

DRILL SHIP

SHIP INSPECTION REPAIR

CONTENTS

01	MOT CO.,LTD
02	HISTORY OF COMPANY
03	EQUIPMENT
04	CERTIFICATE
05	BUSINESS PARTNERS
06 07	SERVICE ITEM (U/W INSPECTION)
08 09	SERVICE ITEM (U/W INSTALLATION, CUTTING)
10 11	SERVICE ITEM (U/W THRUSTER INSTALLATION)
12 13	SERVICE ITEM (U/W COFFERDAM WORKS)
14 15	SERVICE ITEM (U/W WELDING)
16 17	SERVICE ITEM (U/W CLEANING, POLISHING)
18 19	SERVICE ITEM (U/W CLEANING)
20 21	SERVICE ITEM (U/W PUBLIC WORKS)
22	SERVICE ITEM (U/W PUBLIC WORKS)
24	SERVICE ITEM (U/W PUBLIC WORKS)

MOT CO.,LTD

Introduce



MOT CO., LTD.

Welcome to MOT CO., LTD where we strive to provide exceptional service in the fields of commercial diving technology. With years of experience and expertise, we support various vessels and marine structures with restoration and maintenance work using most up to date technology.

Established in Busan, Korea in 2008, MOT CO.,LTD proudly grew into an enterprise servicing both domestic and international clients from all over the world. Currently, we are a trusted number one service supplier for many and we continually strive to meet our customers' expectation by providing exceptional service.



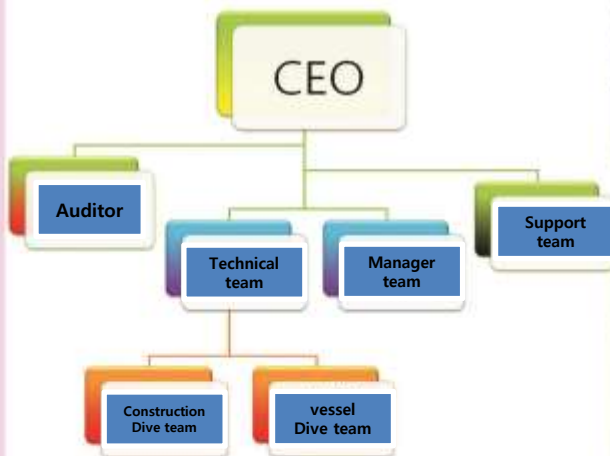


MOT CO.,LTD

1. HISTORY

- 2008 – Founded Mirae Ocean Technology (MOT)
- 2009 – Certified ISO 9001:2000
Certified ISO 9001:2008
Certified KR
- 2010 – Change of name to
Mirae Ocean Technology Co., Ltd (MOT)
- 2012 – Certified NKK
- 2015 – Certified DNV-GL
- 2016 – Certified ABS
Certified LR
Certified RINA
- 2020 - Change of name to MOT Co., Ltd
- JEJU Branch office open

2. ORGANIZATION



MOT CO.,LTD



3.EQUIPMENT

Our diving equipment along with our commitment from staff will always guarantee exceptional services in any given conditions. The equipment is handled with care, and regular maintenance allows it to be used without fault during service. However simple or complex the work, you can trust your vessel to be treated with most relevant technology.





4.CERTIFICATE





4. CERTIFICATE





5. BUSINESS PARTNERS

2010 –

SAMSUNG HEAVY INDUSTRIES CO., LTD
 HANJIN HEAVY INDUSTRIES CO., LTD
 HYUNDAI HEAVY INDUSTRIES CO., LTD
 DSME
 SUNG DONG HEAVY INDUSTRIES CO., LTD
 ANGRO EASTERN SHIPMANAGEMENT
 CMA CGM U.K
 APL
 EURONAV SHIPPING
 HANJIN SHIPPING
 HANJIN SM
 HYUNDAI SHIPPING
 INTERNATIONAL PAINT (I.P)
 IPK.IP SANGHAI IP.HK
 IP.UK IP.GREECE IP.USA etc
 CIDO SHIPPING (H.K KOR) CO.,LTD
 YANG MING SHIPPING
 EPIC-GAS S.M
 OSM PTE.LTD
 V-SHIP S.M (GREECE)
 DIAMONDBAY (Yacht) CO.,LTD
 etc

OFFERSHOR PART
 BP (U.K)
 SAIPEM
 PRIDE
 TRANCE COEAN
 SEADRILL
 Rolls-Royce
 etc

MOU DIVING COMPANY (OVERSEA)
 CHINA. SINGAPORE .HONGKONG
 JAPAN. TAIWAN. DUBAI etc



SERVICE ITEM

**CCTV
VIDEO
PHOTO INSPECTION**

*C.C TV
Inspection*



DIGITAL CCTV INSPECTION



CCTV Inspection
Use of top spec digital cctv monitoring system to record and edit on site. Videos can be transmitted to smart phones, hardware, and even to automotive display panel. Multiple systems can be positioned allowing simultaneous monitoring on site.



Photo Inspection

Photo Inspection
Shooting crisp and high quality photos using HD digital camera.

Video Inspection

Video Inspection
Shooting crisp and high quality videos using HD digital recorder.



SERVICE ITEM

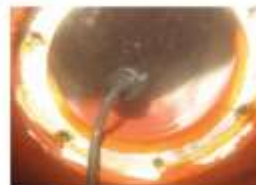
(Structure Underwater Installation & Un-installation)



*Sea Chest
Underwater Extension Work*



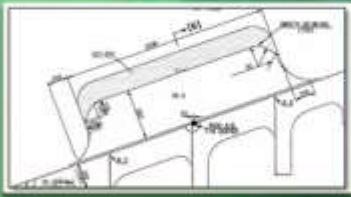
*Speedlog Transducer
Underwater Installation*



Saver Fin Underwater Cutting Work



UNDERWATER CUTTING WORKS



SAVER FIN UNDERWATER CUTTING WORK

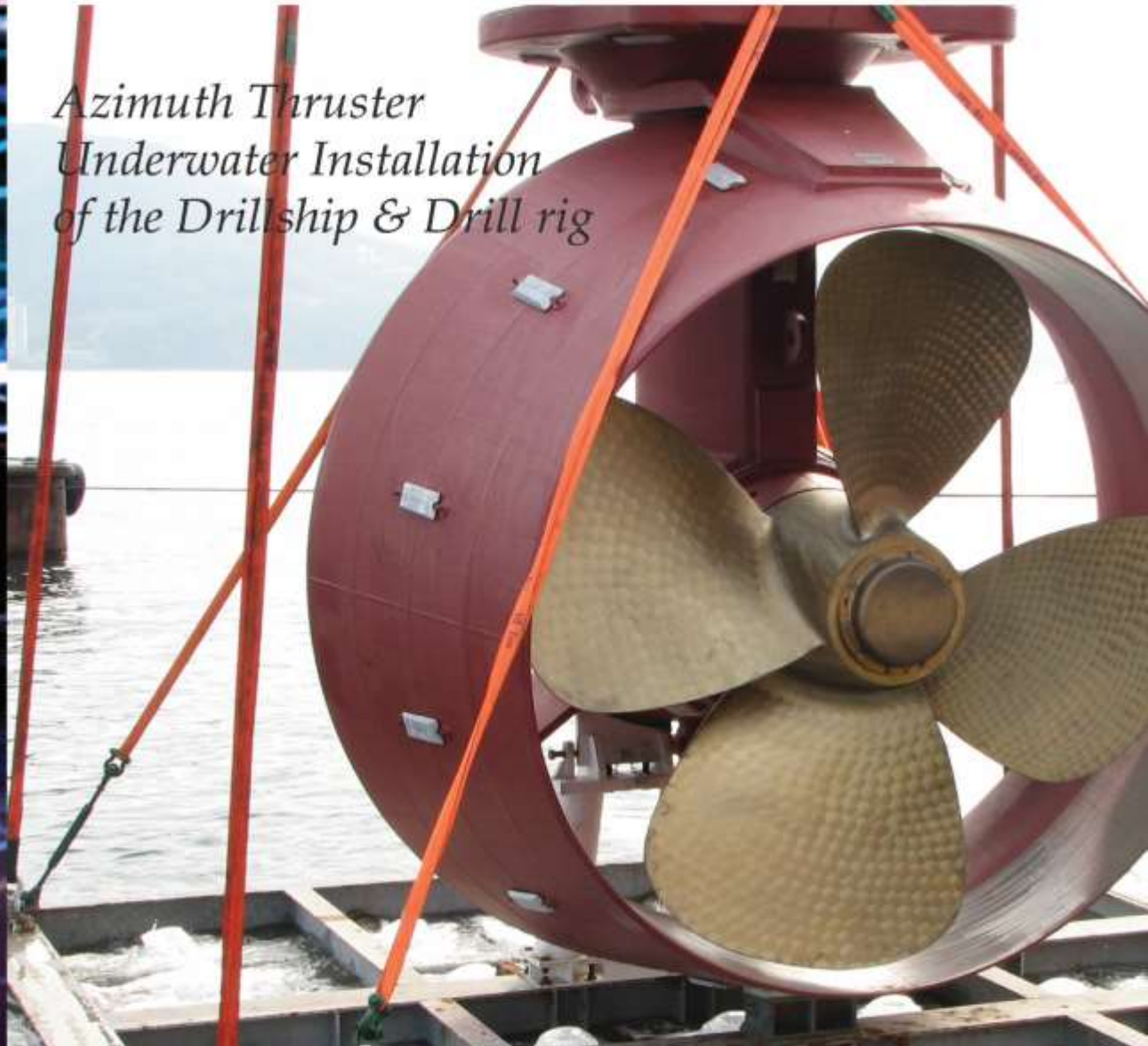
AUTO-CAD and 3D MAX are used to ensure your understanding and satisfaction of service



SERVICE ITEM

**Azimuth Thruster
(Azimuth Thruster Underwater Installation)**

*Azimuth Thruster
Underwater Installation
of the Drillship & Drill rig*



A drillship is a maritime vessel that has been fitted with drilling apparatus.

We guarantee an immaculate process for underwater jobs. Important work performed under water includes not only installing/removing drillship, and drill rig, but also installing/removing hose connector for FPSO.

All work is recorded live via CCTV and supported with electronic communication devices between divers and directors to ensure safe working environment.



SERVICE ITEM

U/W REPAIR OF COFFERDAM (Underwater Rudder Repair Work By Cofferdam box)

U/W COFFERDAM WORKS

A cofferdam is an enclosure created beneath the water for the purpose of creating a dry working environment.



Cofferdam is used widely in the field of commercial diving technology in order to repair vessels in water. With the construction of cofferdam, vessels with cracks or dents on the side or bottom panel can be easily repaired. It is also used for major reconstruction job for bow thrusters, propellers and rudders.

Constructing cofferdam is a complex work requiring diverse skill sets and expertise. Due to its complexity, MOT continuously attends relevant seminars and training to uphold with industry standards.



SERVICE ITEM

(Underwater Welding)

*Speciality Welds
Underwater Wet Welding*



U/W WELDING

Although methods of underwater welding were developed in 1801 by Humphrey Davey, it wasn't until 1917 when underwater welding was used to prevent water leakage on vessels. Subsequently, this method was applied by the Americans during World War II for their vessels.

Since then there has been many ongoing research and developments to improve underwater welding. Continuous development of welding equipment and welding sticks has significantly contributed to modern day work. MOT makes an effort to meet higher standard of work by employing Original Welding

Stick and Generator.

Underwater Pipe Line Welding Repair.

Underwater Pipeline Welding Repair

Underwater welding work includes restoring vessels with corrosion, cracking and discoloration, installation and removal of parts, refurbishing underwater pipelines, repairing docks and harbors, and replacing old ANODE or rope guards.



SERVICE ITEM

(Underwater Hull Cleaning)
(Underwater Propeller Polishing)

*Underwater
Hull Cleaning Work*



*Underwater
Polishing Work*



SERVICE ITEM

(Underwater Hull Cleaning by High Pressure Water jet)



Underwater

Hull Cleaning Work-waterjet

A high pressure waterjet is generally remove the Seaweed & barnacles.

It is available Silicon .

A high pressure waterjet is used to remove seaweed, seagrass and barnacles without the danger of removing vessel paint. Cleaning can benefit vessels by increasing fuel efficiency, reducing sailing time, protecting and increasing life expectancy of vessel panels from corrosion. Additionally, other important parts such as, bottom sensor, I.C.C.P, sea chest can be cleaned for enhanced performance.



- Max pressure: 400ba
- commercial pressure : 350bar
- discharge: 26 l/min
- engine: Vanguard 27hp
- high pressure hose: 30m
- weight: 75kg • size: 76x106x85cm



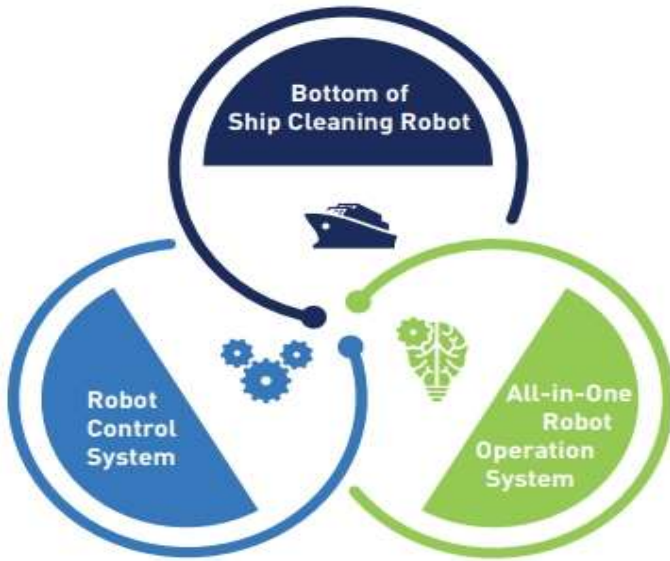
UNDERWATER CLEANING
WATER JET

SERVICE ITEM

UNDERWATER
HULL CLEANING
ROBOT



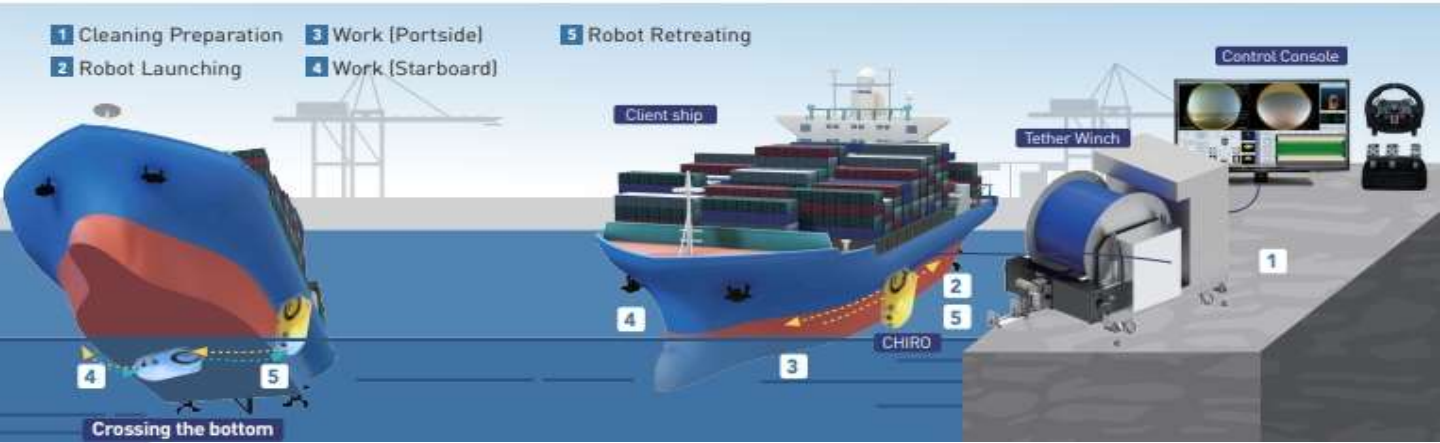
SERVICE ITEM



Advantages of SLM Underwater Cleaning Robot (CHIRO)

- Cleaned debris is collected
- Damage to ship coating is minimized
- Operable in a wharf and/or an anchorage
- Simple control and ergonomic operator console design
- Easy to respond to a ship sailing schedule
- Possible to operate with a few ground crews
- Fast and accurate work
- No risk for diver's life
- Operable throughout seasons, day and night

Operation Concept of SLM CHIRO



SERVICE ITEM



UNDERWATER
HULL CLEANING
ROBOT

Performance and Specifications

Cleaning Speed:

1,440m²/hr (@0.5m/sec)

Power Consumption:

12kw (driven by net power)

Time Required: 8 hours

(at the fouling rate of 30 or less)

Cleanable Area: at least 85% of the underwater surface of a ship (Up to 2m of RC (radius of curvature))

Brush:

controls torque and pressure precisely

Prevention of Pollution: pump sucks cleaned dust/debris and collects it through an internal filter.

Navigation Assistance: depth-contour autonomous straight driving and free rotation in 360 degrees

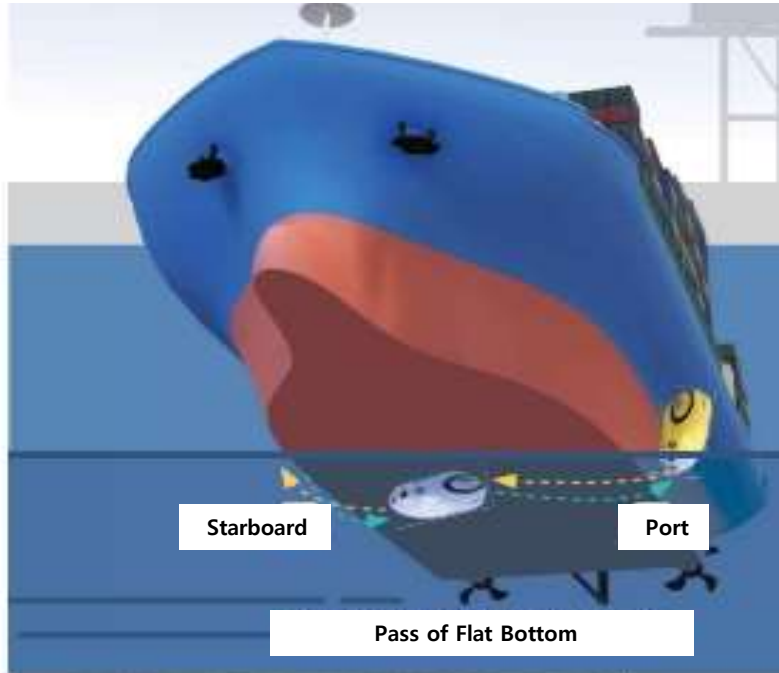
Maximum Depth: 50m

Operation Personnel:

2-3 people (driving is easy to learn)

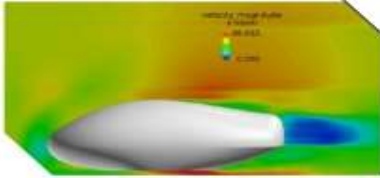
SERVICE ITEM

Process of U/W LOBOT cleaning System



SERVICE ITEM

Mechanism of Driving



Curved Surface

- Aligned centers of Mass and Buoyancy
- A single shell with beautiful hydrodynamics
- Stable magnetic attachment, even along curved surfaces



Debris suction and built-in storage

Cleaning Debris Filter

- Brushing and vacuuming take place simultaneously and collect debris swiftly

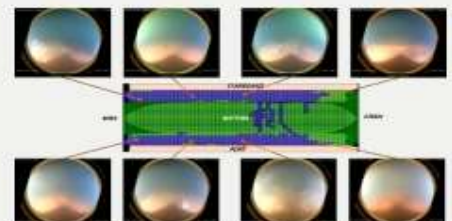
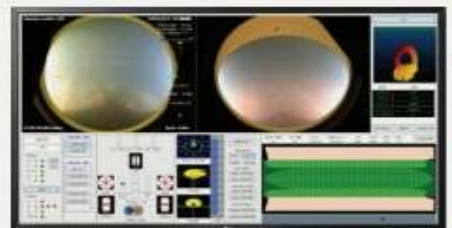


Cleaning Debris Filter



Robot location tracking

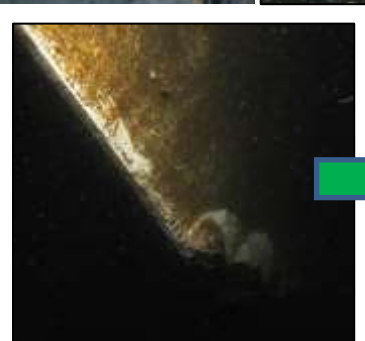
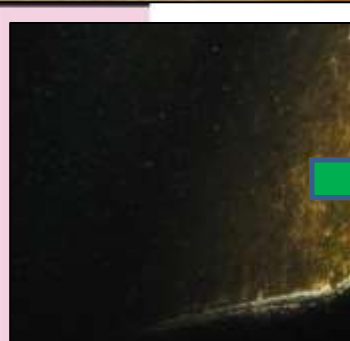
- Robot location is tracked at all times
- Each grid is linked to its recording



SERVICE ITEM

(MEGA Yacht U/W management)

we support yacht management system for the safety sailing
And saved of yacht management cost



SERVICE ITEM

(Public Works)

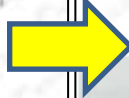
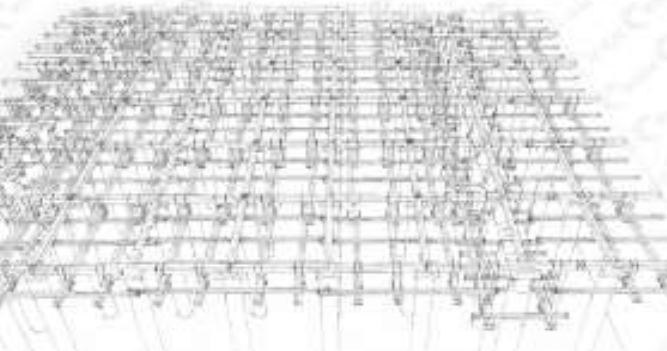
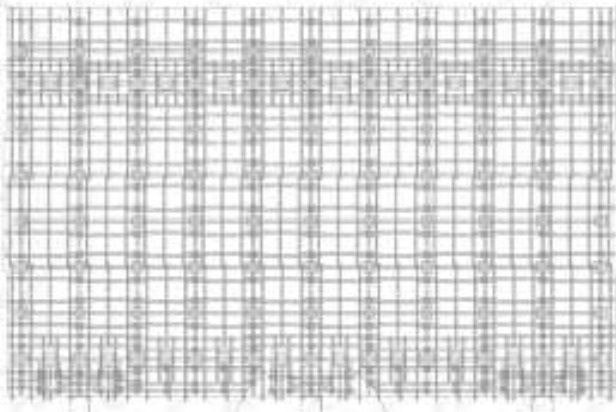
*Breakwater &
Quay construction*



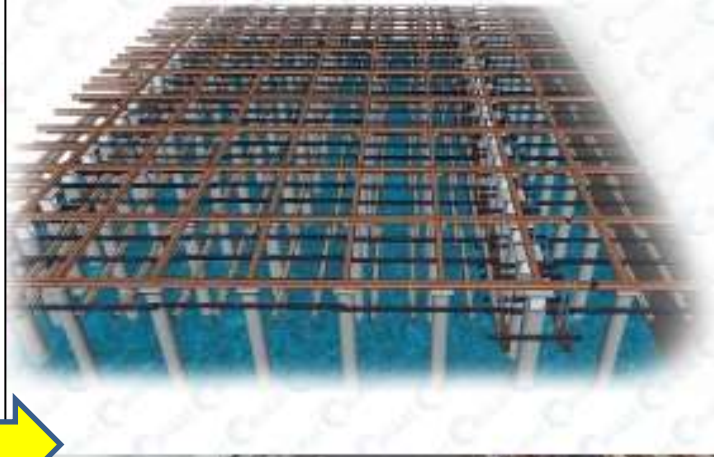
FILE DRIVING CONSTRUCTION



3D SIMULATION



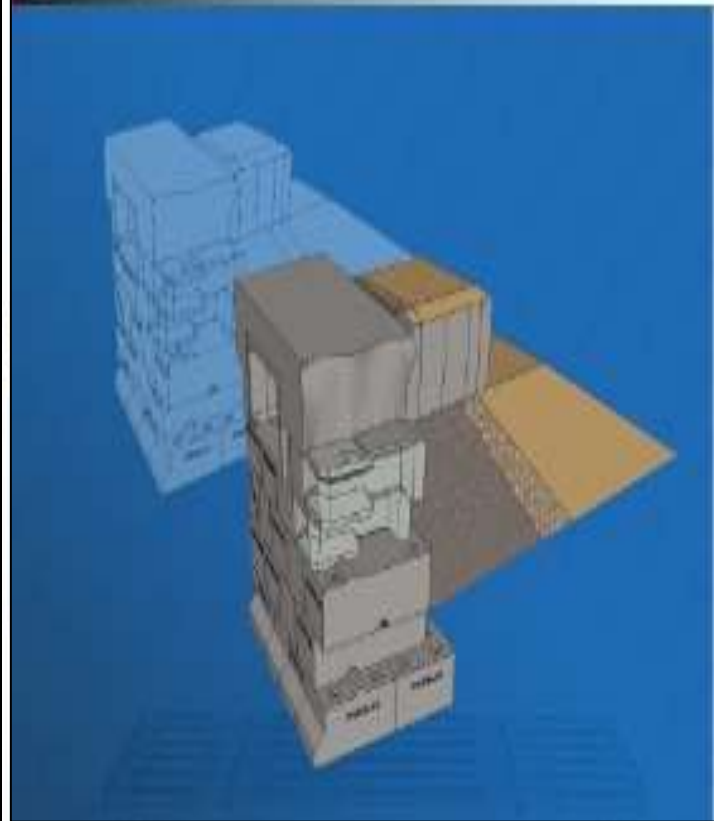
3D SIMULATION



3D SIMULATION



3D SIMULATION



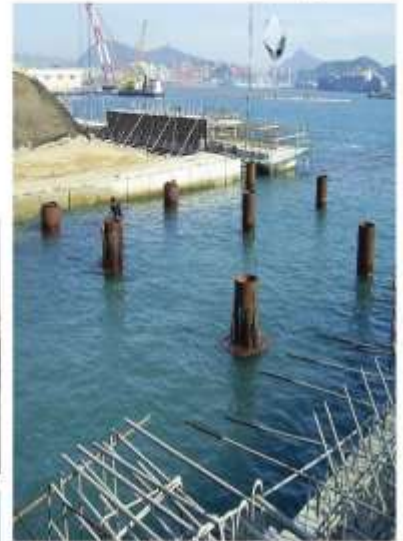
SERVICE ITEM

(Public Works)

*Underwater
Dense Work*



*Underwater
Public Works*



Underwater public work includes but not limited to, installation/removal and maintenance of construction facility, and installation/removal of submarine cables and pipelines at harbor, and dock.

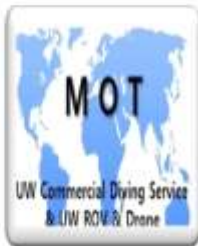


SERVICE ITEM

(Public Works)

*Marine Structure
Underwater Repair Works.*





MOT Co.,Ltd & TOS TEC Inc



Business Item : UW Commercial Diving Service & UW ROV & Drone

Head office : 80 Saha-ro, Saha-gu, Busan, Korea

Jeju office : 11-4 Sangmo-ri, Daejeong-eup, Seogwipo-si, Jeju-do, Korea

**TEL : +82-070-8672-1039 FAX : +82-070-4032-1035
Mobile(24h) +82-10-5883-9300**

E-mail : mot@mot21.com tostec@tos-tec.com

Web Site : www.mot21.com